

Portfolio



Serpent in the Sea

The natural translucent virtue of white alabaster gives rise to illuminations from within the piece. The fusion uniting light and shadow brings to the fore the fluidity of the sculpture. The personality of the piece transforms viewed from different perspectives. The realms of possibility may manifest as animal, bird, water, clouds, serpent, swan, new sprouting plant life, etc. The origin of this sculpture is the result of integrating ritual with the spirit of the stone, while opening myself to direction from conscious and unconscious sources.

42cm x 23cm x 22 cm, alabaster

(was selected for the competition Hedendaags Klein Sculptuur Heist-op-den-Berg in 2016)



Sweet Embrace

Sweet Embrace symbolizes an intimate playful dance between my love and myself. Two single sensual arching curves, supporting and holding each other, united as one. Ultimately this form offers the paradoxical nature of small being big. It could transform from present size to a monumental architectural installation within a city park, train station or near an ocean in harmony with the free-flowing motion of ever changing waves.

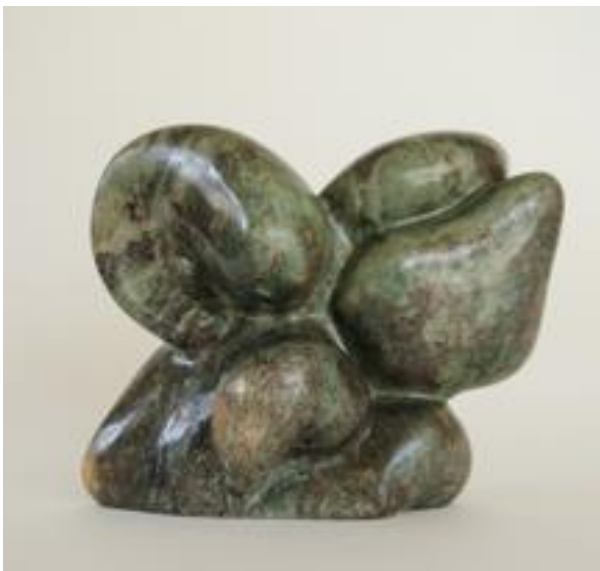
30cm x 20cm x 15cm, alabaster



Between Two Worlds

Between Two Worlds intentionally shows contradictions, like humanity's relationship to Nature and people's relationship with themselves and toward others: strait, square lines versus curved organic forms, chaotic versus natural rhythm. But the doorway between worlds is open, connecting the seemingly contrasting worlds. Contradictions within us are a microcosm of humanity's relationship to the earth.

19cm x 14cm x 35cm, soapstone



Emerging

A myriad of deep colors create a feeling of distance inwards. One could be looking through deep space into galaxies, nebulas, and incalculable stars within this engaging serpentine piece. There are three embryonic shapes rising out of the form, representing the possible new world manifesting at this time. Encircling the sculpture, unforeseen discoveries can illuminate the form and the beholder.

30cm x 14cm x 24cm, serpentine



Ancestor I

15cm x 17cm x 35cm, granite



Ancestor II

20cm x 30cm x 32cm, granite

Ancestors

My ancestry is partially known and unknown as a consequence of being adopted at birth. Before starting both these pieces I had thoughts and feelings about wanting to make a piece to honor my Ancestors known and unknown and these are what came through the process.



The Hole Unfolding

Abundant Earth tone colors compose the form; the hole penetrates through the unfolding shape. The hole creates an irresistible passageway through which the viewer travels. Like a mountain ridge, the spine climbs from the base, which is characteristic of a human pelvis.

Innuendos of Earth, Human, Animal, all are present in the “Hole Unfolding”.

20cm x 19cm x 28cm, soapstone



Arriving

The Glacial Blue of this piece shows itself subtly from different angles viewing the form. It can look solid white, cloud-like, then, at a certain angle the deep translucency of the blue can be seen. Sometimes we need to look deeply to experience beauty.

18cm x 23cm x 24cm, Blue Marble



Break a leg

This playful piece came to be only after a major base leg broke off when I was sanding the form. Brokenness can happen, it needn't stay that way.

32cm x 14cm x 21cm, Chinese Soapstone, price



The Magic of Fertility

For me, this piece represents the magical Life Force of Mother Earth. She is pregnant with life. I feel more pieces will come to be made to honor and to remember us "Humanity" as Caretakers of her, symbolizing our natural connection to her.

26cm x 17cm x 30cm, Brazilian Soapstone



First Guard

For me, this piece symbolizes the “First Guardian Spirit” that came out in form through my ritual process.

12cmx22cmx34cm, Serpentine



Twins

The Twins were born as one. One of the first stones I carved. It broke in half and I didn't want to give up on the sculpture and the twins formed after the split.

2 x 12cm x 10cm x 32cm Soapstone - base: Serpentine



Unity

Unity, for me, is about balance. Female and Male energy. Sexuality connected to the creative process. Being my first sculpture made at my Art School Story, it is deeply meaning and significant for me.

35cm x 35cm x 33cm, White Concrete



Bird

Singing Bird?
Hooded priest in ceremony walking?
Both in gratitude.

13cm x 16cm x 45cm, Wood

Commissions

Ross can make a unique sculpture for you.

1. First, you will express your wish and possibly explain the type of material, stone, feeling, size, location, occasion, price ... you imagine for this sculpture.
2. Ross will ask permission to visit your place to take pictures of the space provided for the sculpture (inside or outside). He will then search for a stone/piece of wood and buy what's needed. He will start the process of listening to the material and/or the emerging forms and express this in one or more maquettes.
3. Then he will invite you to come and see the maquettes and give your impressions. At this point you will decide if you want to continue with the project. If yes, we will sign a purchase order and you will pay a deposit for the stone/wood/materials used and the initial designs. At this point an estimated price for the final sculpture will be agreed.
4. From here, Ross will really start the creative and spiritual process of the interaction of his hands, his heart and the spirit of the stone or other material. This can take a few weeks or a few months (max 6 months). If you like to come and see the progress of the sculpture, you are very welcome, if you prefer to be surprised by the final, that's fine too.
5. When the sculpture is ready, we will invite you to come and see it. If, for some reason, you do not want to or cannot purchase the sculpture, this is fine. Of course we hope you are delighted. Ross might have to do some final finishing and/or purchase or creation of an appropriate stand (sokkel). You will pay the agreed remaining amount.
6. A little ritual will be done now for the sculpture to move from Ross's atelier to its new home. Ross might bring the piece to your place to finalize placement together with you (to be agreed).

Ross's sculptures are sold by IC Consulting bvba (contact +32 (0)486 40 69 64). You will receive a purchase document when buying as a private person or an invoice if your business is purchasing the art work.